



.....

INNOVOLT MANAGEMENT CLOUD

.....

EASY ACCESS
and
CLEAR
UNDERSTANDING
of
POWER-RELATED
EVENTS

www.innovolt.com/support

877.682.7015

14 PIEDMONT CENTER, SUITE 1205
3535 PIEDMONT ROAD NE
ATLANTA, GEORGIA 30305

The Innovolt Management Cloud (IMC) enables users to *remotely track and monitor vital electronics environments*. By collecting and aggregating data into a centralized cloud location, this solution allows users to analyze key information such as the frequency, type and location of power-related events. The trends, graphical dashboards, and summary views provide the necessary tools for businesses to *predict, measure and maximize the performance of assets across the distributed enterprise* from an easy-to-use, web-based solution.

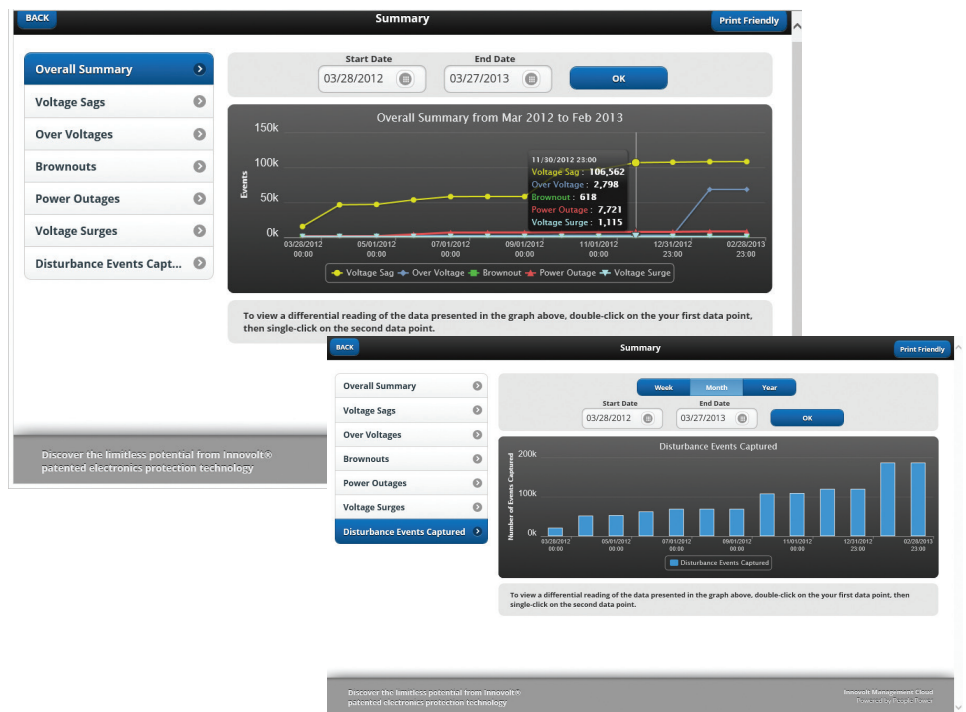
By collecting data using the Innovolt Power Doctor (PD) or SmartPhone Adaptor (PDSA-100), users can upload data to the IMC. The configurable data is then available for analysis—giving you easy access and a clear understanding of all power-related activities.

This innovative software solution ensures system uptime and data integrity by allowing you to monitor your fleet of electronics through software that empowers your service department.

- Protect equipment while analyzing and consolidating from all data sources.
- Proactively manage electronic assets
- Predict, measure, and maximize the performance of assets

With a *user-friendly interface*, the Innovolt Management Cloud provides:

- Access to data from any web-enabled device
- Better graphical representation and dashboards of collected data
- Summary view with different ways to analyze the data
- Differential readings with date comparisons
- More detailed information on connected equipment
- Print-friendly reports
- Ability to export data



The Innovolt Management Cloud is currently offered as a complimentary SaaS solution available with purchase of the Power Doctor and acknowledgment of the click-through agreement. However, future software releases will require the purchase of an enterprise license.